

Freedom

Why?

The Freedom has been reengineered for added strength and space, all within a smaller footprint! New features include a vacuum-formed base, reinforced side panels, longer hand rails, molded vents, plastic carrying handles, and a strengthened roof, door frame, closure and latch.

From the ground up the Freedom is stronger, using a custom-made vacuum-formed base to create a solid foundation. In impact tests, the floor and wall joints withstood a force twice as hard as previous designs without damage, and a beveled exterior floor edge improves fork lift access for moving.

The reengineered floor has the added benefit of being slightly narrower, for ease of transport, but the overall floor design actually increases the Freedom's interior space! By widening the front floor area to increase space, it also makes the door opening larger, another added benefit!

Other features of interest are the high-impact, plastic lift handles that will not rust and have a wider grip to reduce hand pressure when lifting. Molded-in vent screens were added to reduce maintenance costs, and longer hand rails provide more stability for end-users. The new roof is 50% stronger having added supports, and maintains multiple tie-down options. Finally, a new heavy-duty door closure provides added durability.

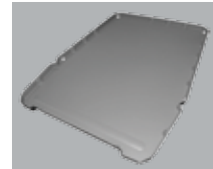
When you add up all the new benefits and include our industry-leading limited 4-year warranty, the Freedom stands alone in quality and reliability.

Colors



Features

The new floor design withstands twice the impact as the old floor. Beveled edges allow the unit to be easily moved around by a forklift.



The door frame has been made more rigid by eliminating a section and adding vertical channels to each side.



The new roof is approximately 50% stronger making it more resistant to snow weight.



Specs

Height	90" (2286 mm)
Width	67" (1702 mm)
Depth	86.5" (2197 mm)
Door Opening	32.7" w (831 mm) x 80.8" h (2054 mm)
Floor Area	4138 in ² (26,696 cm ²)
Tank Volume	68 gal. (257 L)
Seat Height	17" (431.8mm)
Weight	310 lbs. (141 kg)